

MONTHLY MEMBERSHIP PROGRESS REPORT

LOCATION NEPAL

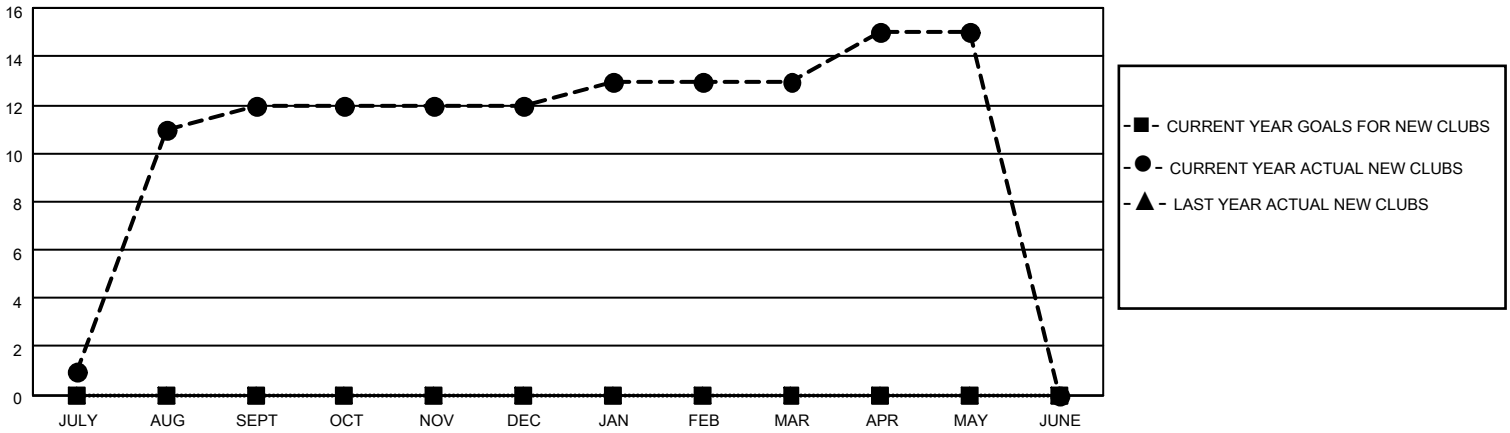
District 325 C

Results as of: 5/31/2023

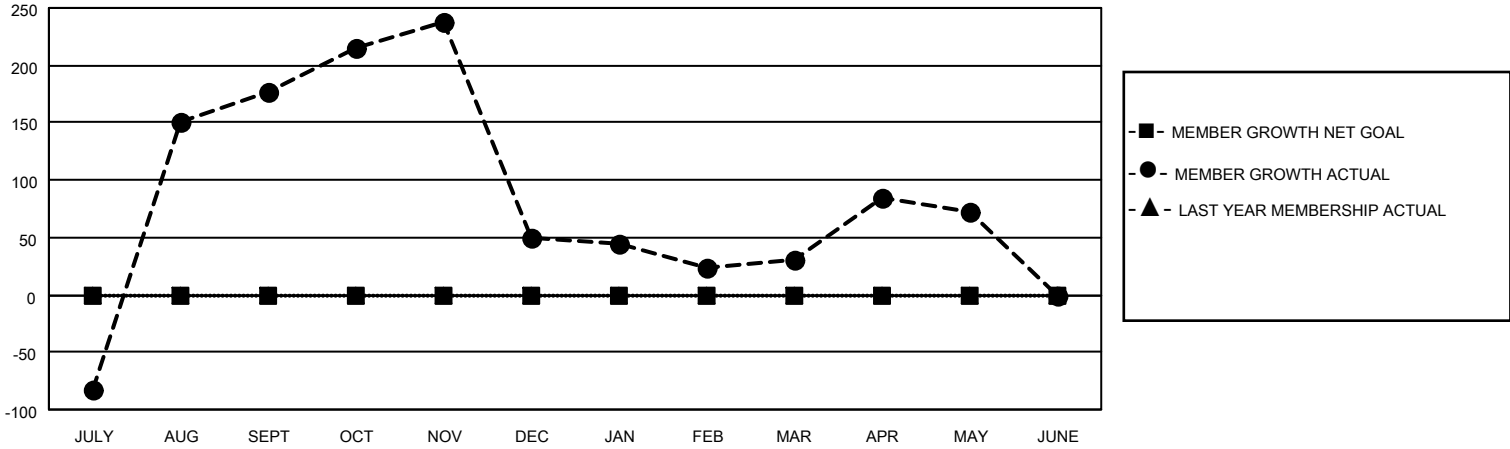
Clubs			
RESULTS FOR 2022-2023			
QUARTER	NEW CLUB GOAL	NEW CLUBS	DROPPED CLUBS
JULY/AUG/SEPT	0	12	0
OCT/NOV/DEC	0	0	10
JAN/FEB/MAR	0	1	4
APR/MAY/JUNE	0	2	0

Members			
RESULTS FOR 2022-2023			
QUARTER	MEMBER GROWTH NET GOAL	MEMBER GROWTH ACTUAL	DROPPED MEMBERS ACTUAL (including transfers)
JULY/AUG/SEPT	0	571	261
OCT/NOV/DEC	0	79	203
JAN/FEB/MAR	0	88	90
APR/MAY/JUNE	0	66	19

GOALS AND ACTUAL NEW CLUBS CUMULATIVE



GOALS AND ACTUAL MEMBERS CUMULATIVE



DROPPED CLUBS: 14

82 CLUBS OF 170 ADDED 1 OR MORE NEW MEMBERS

GENDER DISTRIBUTION

MALE	2,730 (69.68%)
FEMALE	1,187 (30.30%)
NON BINARY	1 (0.03%)
PREFER NOT TO ANSWER	0 (0.00%)

DROPPED MEMBERS

[CLICK HERE FOR CUMULATIVE MEMBERSHIP DATA](#)

DECEASED	8
CLUB CANCELLED	210
OTHER	355
TOTAL	573

TOTAL FAMILY UNIT MEMBERS 3,520

FAMILY MEMBERS PAYING HALF DUES 2,663